

# Instructions

## Space Coaster



**CAUTION**  
Always read instructions before use.  
Please recycle all packaging.  
Be careful of sharp edges when assembling.  
When the elevator begins to slow replace the batteries.  
Adjusting the rail regularly is necessary to continue smooth operation.  
Do not leave your Space Coaster in hot climates for a prolonged period of time.

**NOTE**  
Recommended for ages 14+  
Keep small parts away from children to prevent choking.  
Be careful of all sharp edges or corners.  
Do not bend the base or metal rods included.  
Do not place fingers in, around or near the ball elevator when in use.  
Do not place any other items into the elevator except the balls provided.

Do not force the motor to stop to prevent overheating.  
Store away safely when not in use.  
Do not use re-chargeable batteries.  
Ensure batteries are inserted with the correct polarity.

Do not hold the elevator whilst the motor is running to prevent overheating.  
It is recommended that after continuous play for 5 hours to turn your Space Coaster off to prevent overheating.

**Head Office**  
thumbsUp! (UK)  
Santok House, Unit L, Brintree Industrial Estate  
Ruislip, Middlesex, HA4 0EJ, UK  
Tel: 0845 466 8860  
Fax: 0845 466 8881  
info@thumbsupuk.com  
www.thumbsupuk.com

**thumbsUp! (DE)**  
thumbsUp! GmbH  
Scheidt, 24  
53840 Troisdorf, DE  
T: +49 2241 972 507-0  
F: +49 2241 972 507-88  
info@thumbsup.de  
www.thumbsup.de

**thumbsUp! (BR)**  
Departmento Comercial  
Rua Henrique Jorge Guedes 127Jardim  
Marjunga  
Sao Paulo, Brazil  
T: +55 11 2275 1978  
F: +55 11 2519 8375  
info@thumbsup.br  
www.thumbsup.br.com

**thumbsUp! (FR)**  
164 av. Joseph Kessel,  
76800 Vieux-la-Rue  
Bretagne, FR  
T: +33 (0)1 61 37 02 90  
F: +33 (0)1 61 37 03 05  
info@thumbsup.fr  
www.thumbsup.fr

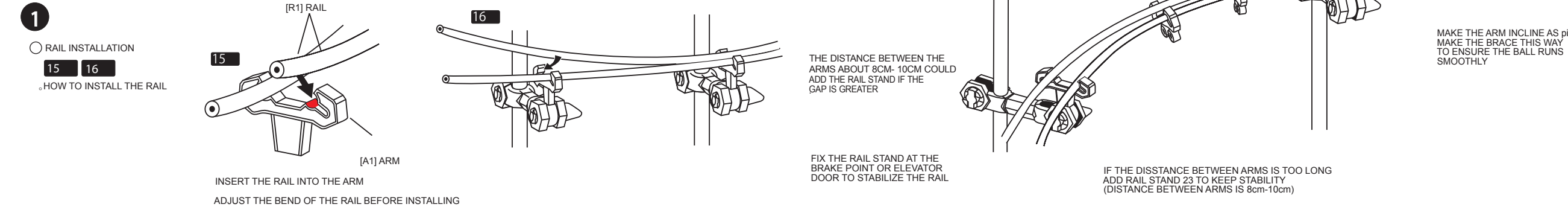
**thumbsUp! (AE)**  
Best Homes Business Center  
M 107, Mezzanine Floor  
Sheikh Zayed Road  
Dubai, UAE  
T: +971 4 3465465  
F: +971 4 3388828  
info@thumbsup.ae  
www.thumbsup.ae

**thumbsUp! (USA)**  
thumbsUp! USA, 841-B  
Fesslers Parkway, Nashville,  
TN 37057, USA  
T: 615-620-1370  
F: 615-620-1371  
info@thumbsupusa.com  
www.thumbsupusa.com

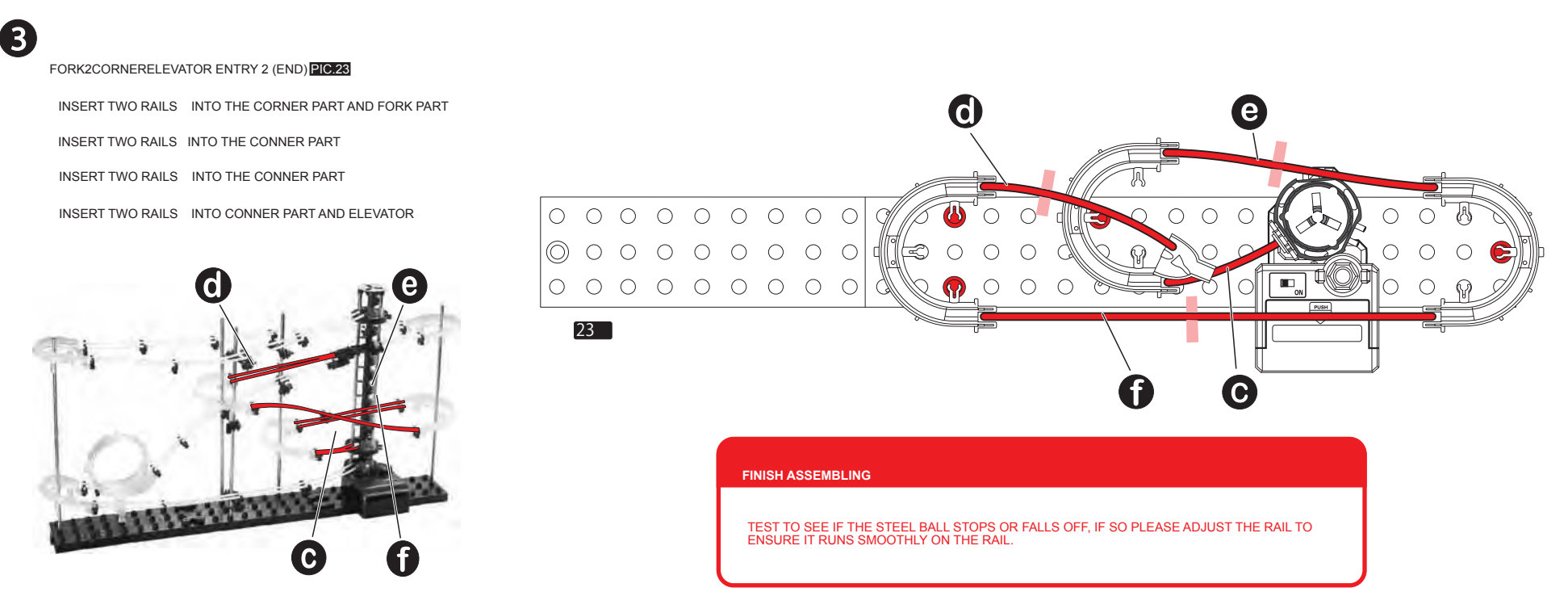
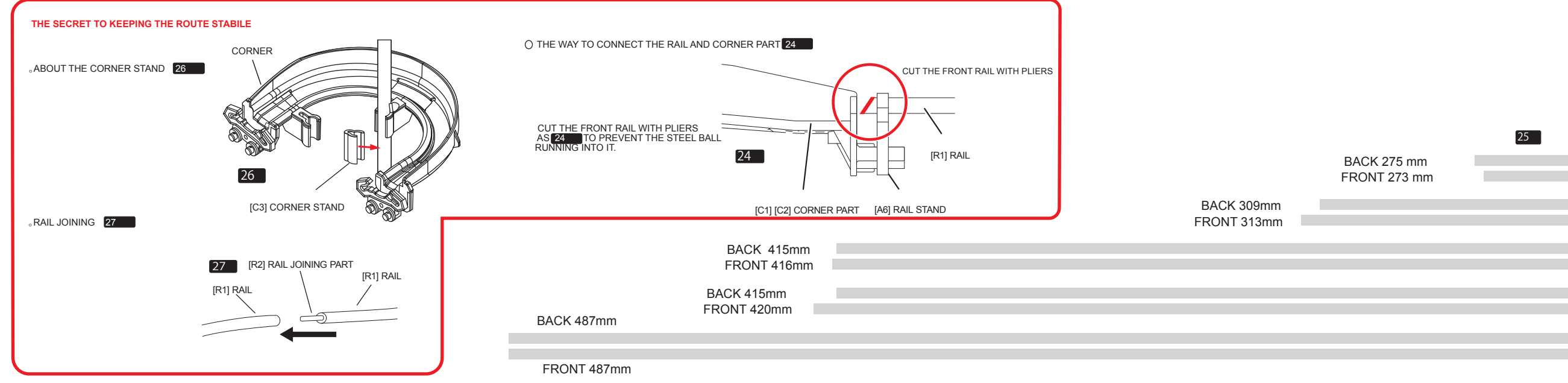
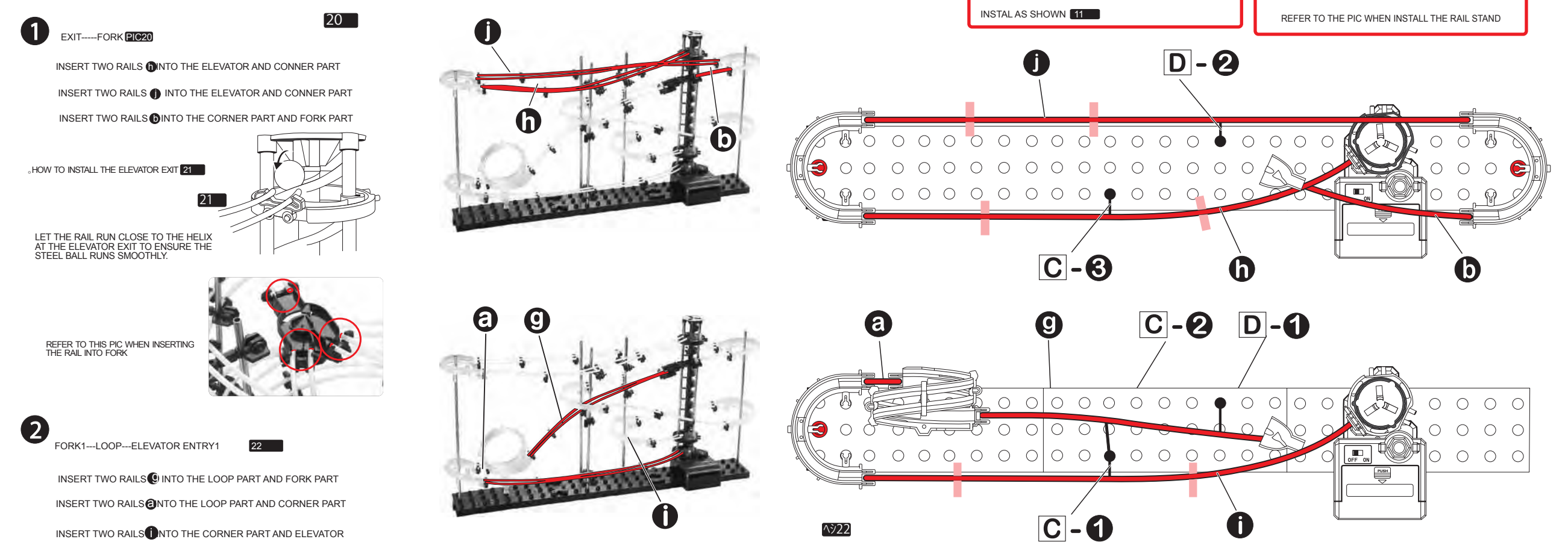
SPCCOAS-GLOW  
Made in China

CE, RoHS, 0-3

### 3 KEYPOINTS



### 4 INSTALLING THE RAILS



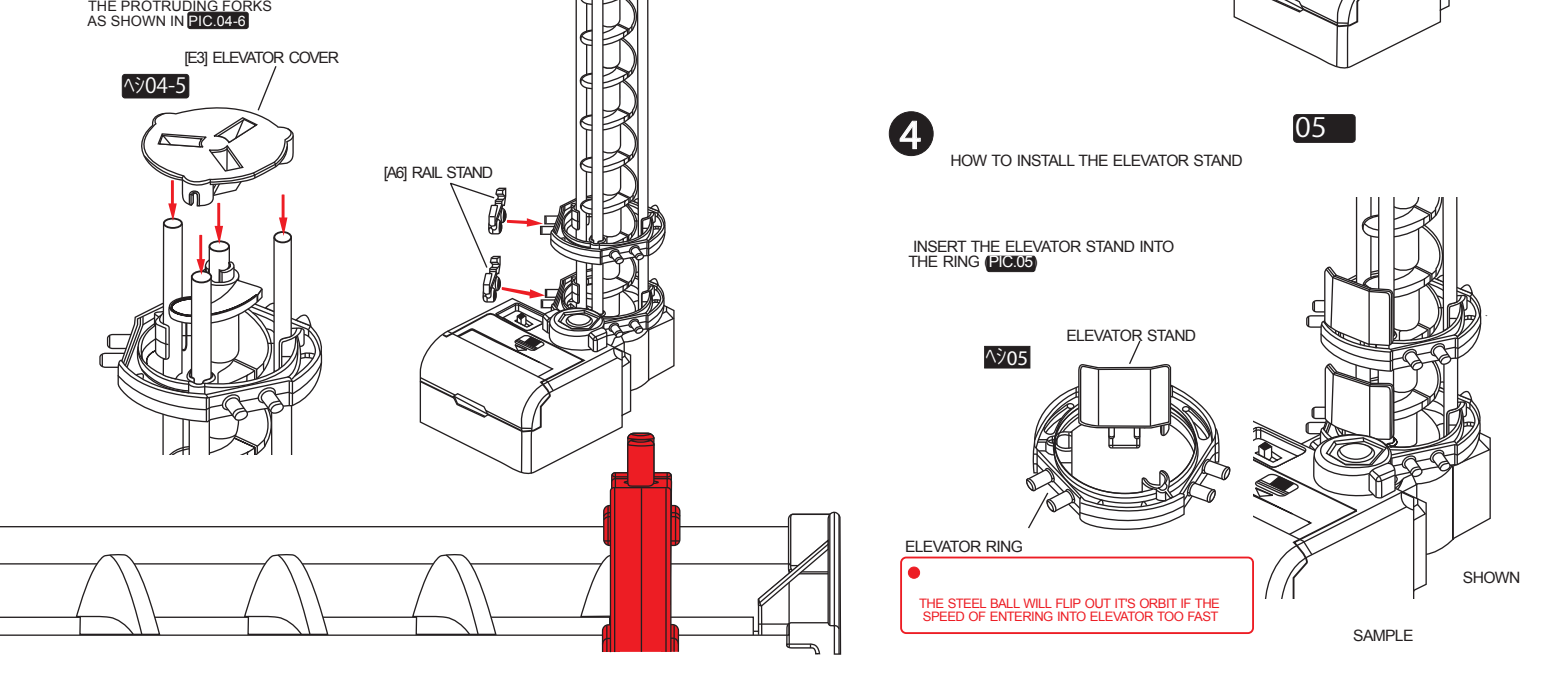
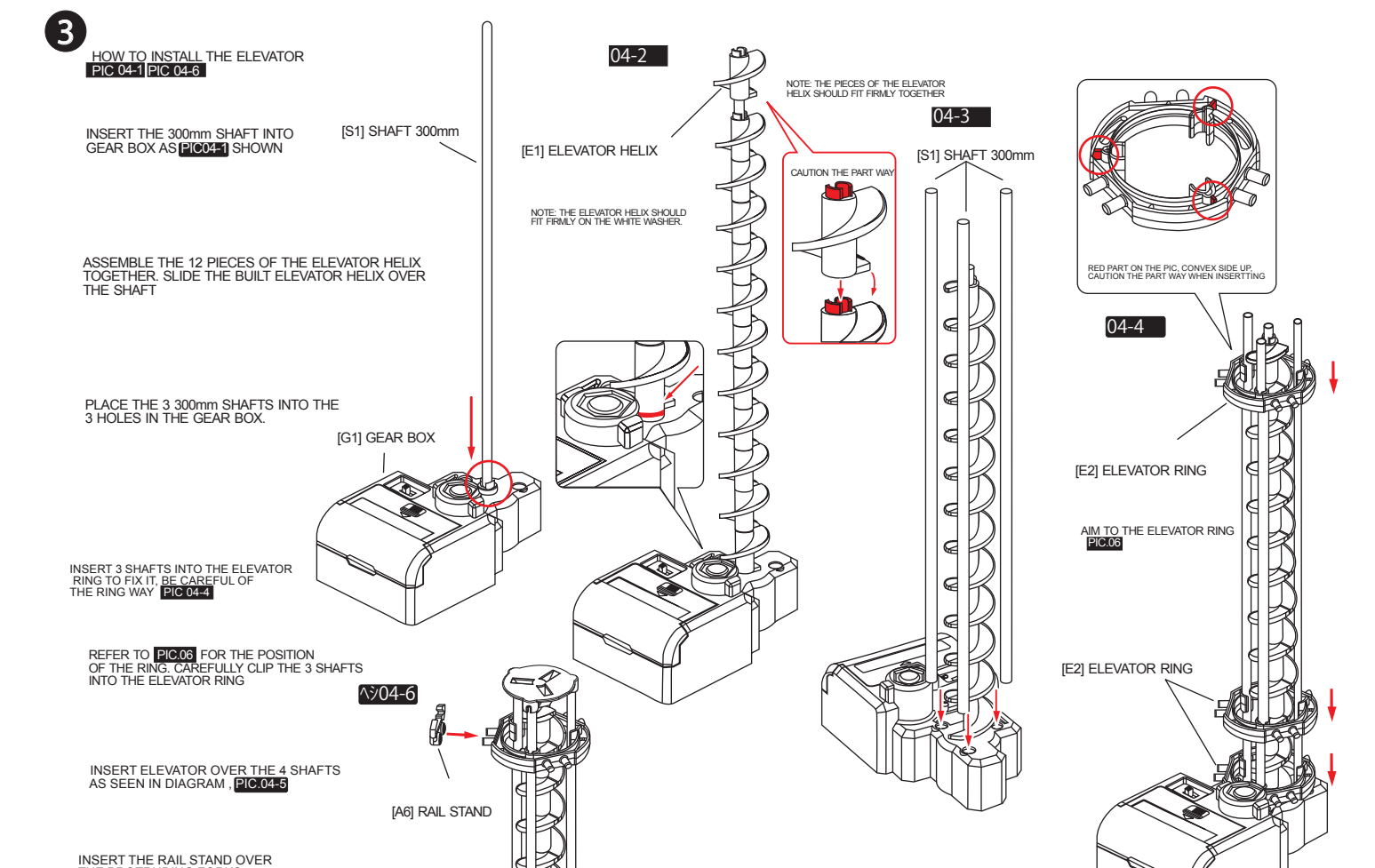
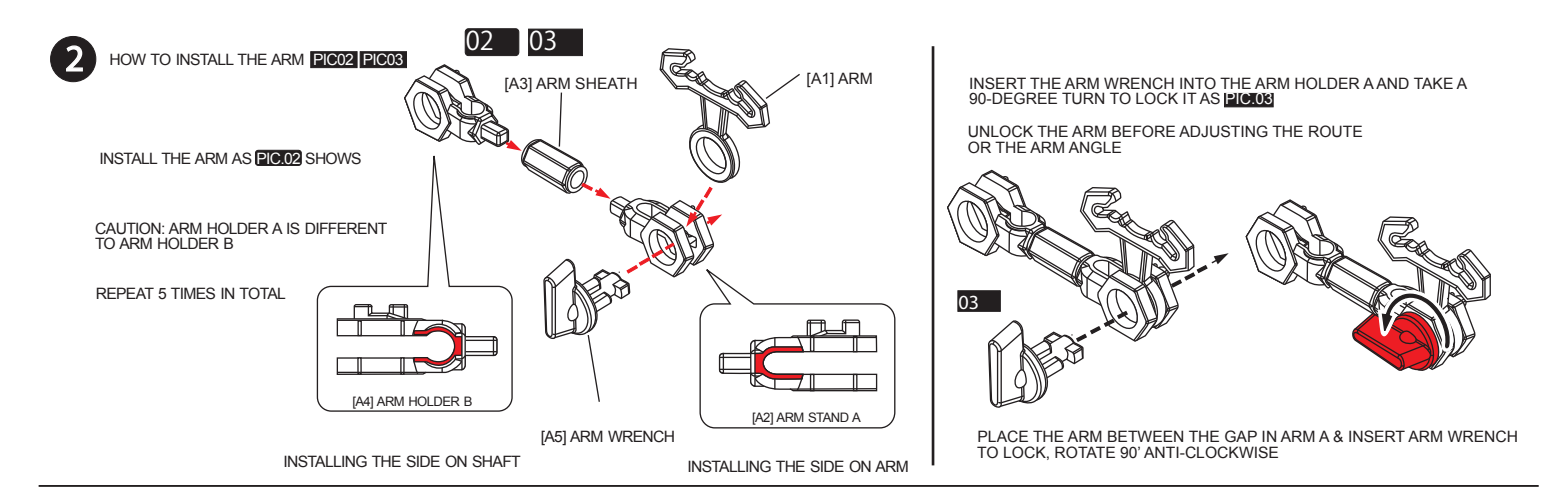
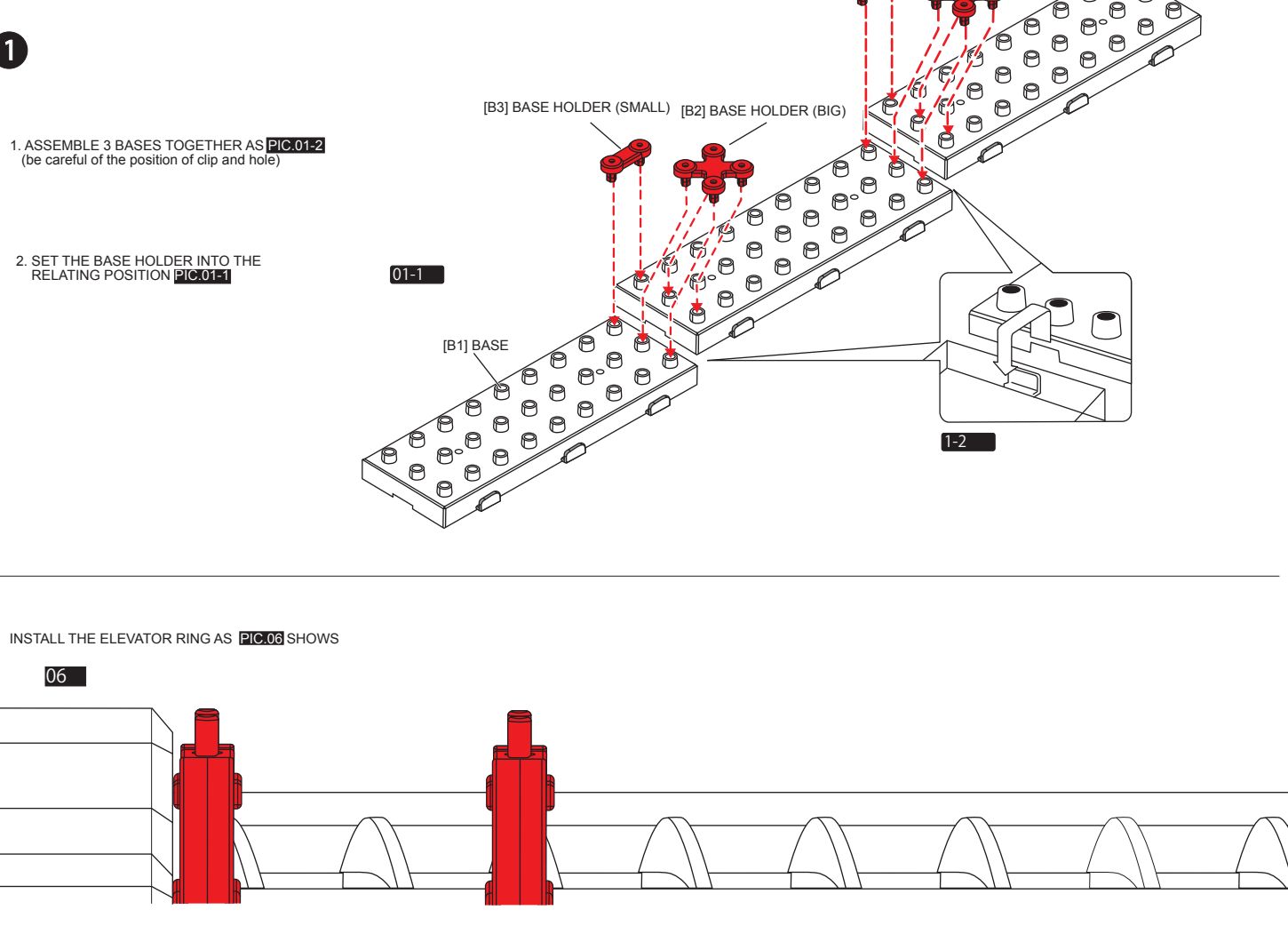
THE FOLLOWING PICS ARE 1:1 SCALE TO RAIL. REFER THESE PICS TO CUT THE RAIL.

BACK 162mm FRONT 157mm	a
BACK 70mm FRONT 73mm	b
BACK 73mm FRONT 78mm	c
BACK 174mm FRONT 170mm	d
BACK 275mm FRONT 273mm	e
BACK 309mm FRONT 313mm	f
BACK 415mm FRONT 416mm	g
BACK 415mm FRONT 420mm	h
BACK 487mm FRONT 487mm	i

### TOOLS FOR INSTALLING

- PLIERS** USE 1 X C 1.5V BATTERY (NOT INCLUDED)
- PEN**
- PARTS LIST**
- (B1) BASE 3PCS
  - (B1) SHAFT 300mm 1PCS
  - (R1) RAIL (60x4 500mm) 1PCS
  - (A1) ARM 5PCS
  - (A2) ARM HOLDER A 5PCS
  - (A3) ARM SHEATH 5PCS
  - (A4) ARM HOLDER B 5PCS
  - (A5) ARM WRENCH 10PCS
  - (M) RAIL STAND 28PCS (+20)
  - (G1) GEAR BOX 1PCS
  - (P1) ARM WRENCH 1PCS
  - (E1) ELEVATOR HELIX 12PCS
  - (E2) ELEVATOR RING 3PCS
  - (E3) ELEVATOR COVER 1PCS
  - (M) RAIL STAND 3PCS
  - (C1) CORNER PART A 5PCS
  - (C2) CORNER PART B 5PCS
  - (L1) LOOP PART 1PCS
  - (L2) LOOP STAND 1PCS
  - (B2) BASE HOLDER (BIG) 2PCS
  - (B3) BASE HOLDER (SMALL) 3PCS
  - (G2) GEAR BOX STAND 1PCS
  - STEEL BALL 2PCS
  - (P2) RAIL JOINT 2PCS

### 1 HOW TO INSTALL



### 2 HOW TO INSTALL RAIL STAND

